

NOTES

1. ALL DIMENSIONS AND LEVELS GIVEN ARE IN MILLIMETERS UNLESS OTHERWISE SPECIFIED.

2. FIGURED DIMENSIONS ONLY SHALL BE FOLLOWED.

3. BOB= BOTTOM OF BEAM
TOB= TOP OF BEAM

| DATE | DESCRIPTION | SIGN |
|-----------|-------------|------|
| REVISIONS | | |


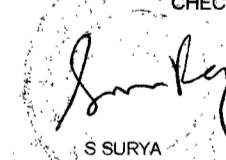
VETTED BY

ALL DETAILS HAVE BEEN THOROUGHLY CHECKED AND ARE IN COMPLIANCE TO STANDARDS, CODES, REGULATIONS IN RESPECT OF SAFETY, SOUNDNESS AND ECONOMY.

PROVN OF HANGAR AND ANNEXE BUILDING AT INS DEGA VISAKHAPATNAM

UPPER & LOWER ROOF SHEETING PLAN

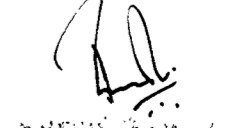
| | | |
|---------|------------|--------------------------------|
| SHT NO. | S24 | HELIOS ENGINEERING CONSULTANTS |
| PRO NO. | ST2204 | |
| SCALE. | AS NOTED | #38-34-66 FCI COLONY |
| DRN BY. | KSS | MARRIPALEM |
| DATE. | 28-02-2023 | VISAKHAPATNAM - 530018 |

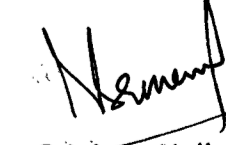
| | |
|---|---|
| DESIGNED BY | CHECKED BY |
|  S SURYA MS (STRUCTURES) |  S SURYA MS (STRUCTURES) |

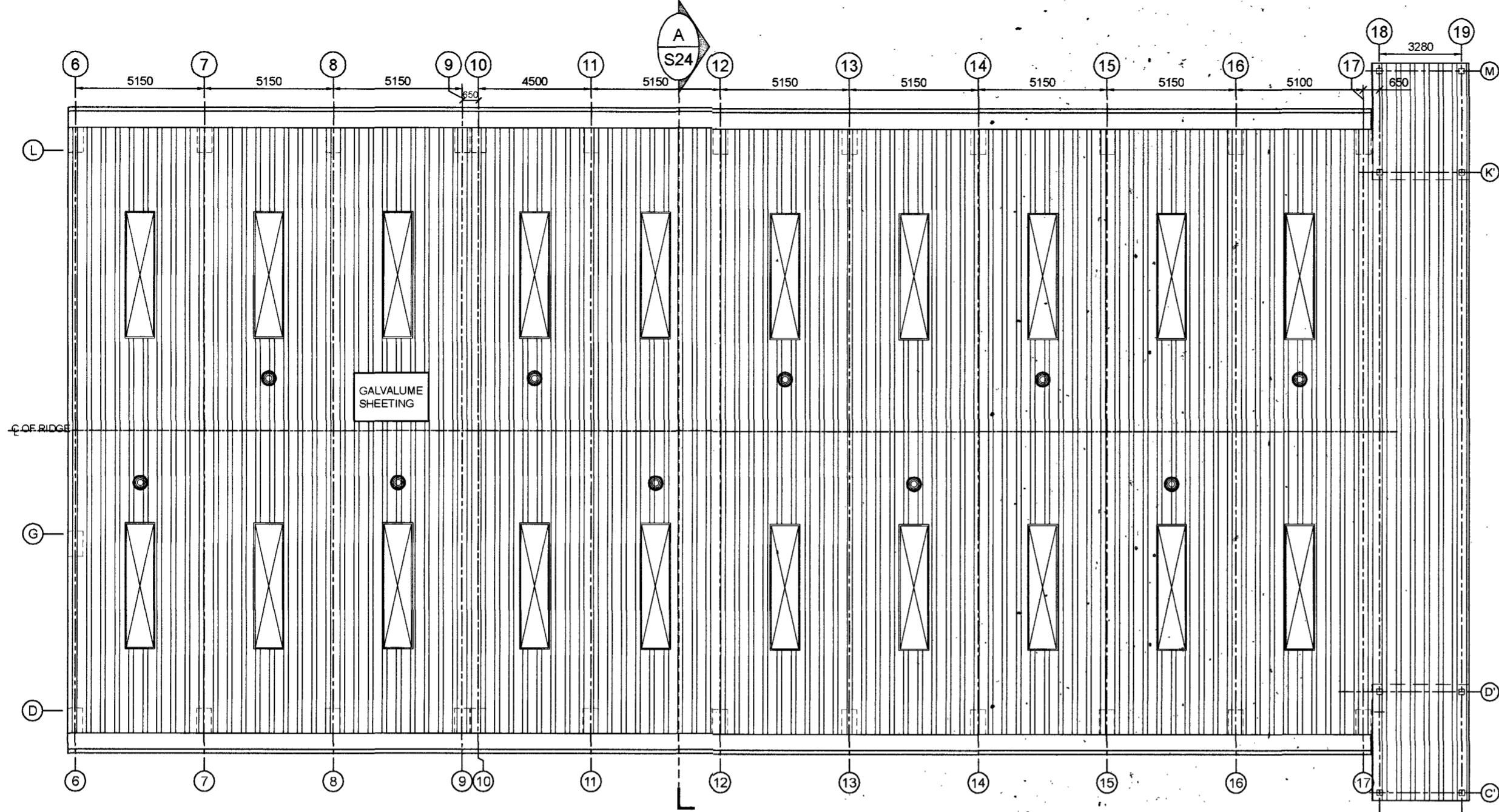
CHIEF ENGINEER (NAVY)
VISAKHAPATNAM

REF.DRG.NO : CEVZ/2022/WD-2120(S) Sht.No.24/40

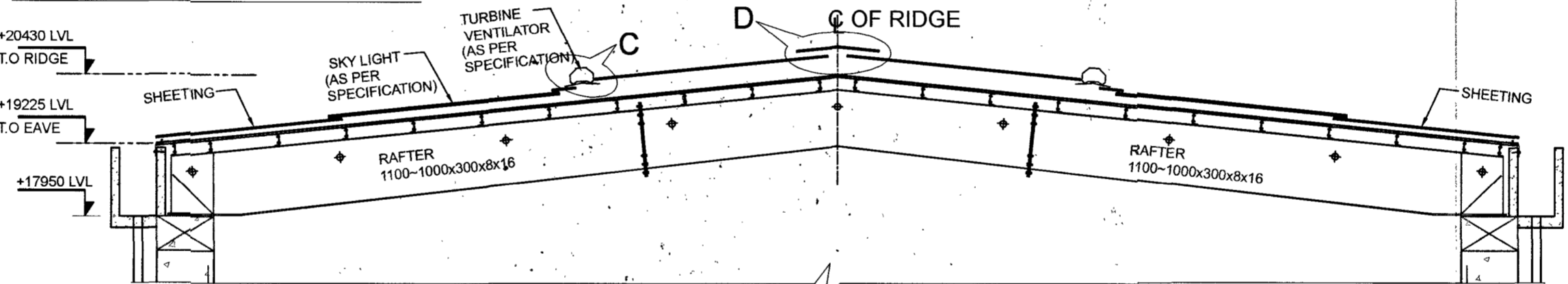
DESIGNS & DRAWINGS PREPARED UNDER CONSULTANCY FROM M/S HELIOS ENGINEERING CONSULTANTS AND VETTED BY ANDHRA UNIVERSITY


Srinivas Nalla, IDSE
CE (NF)
Director (Design)
for Chief Engineer

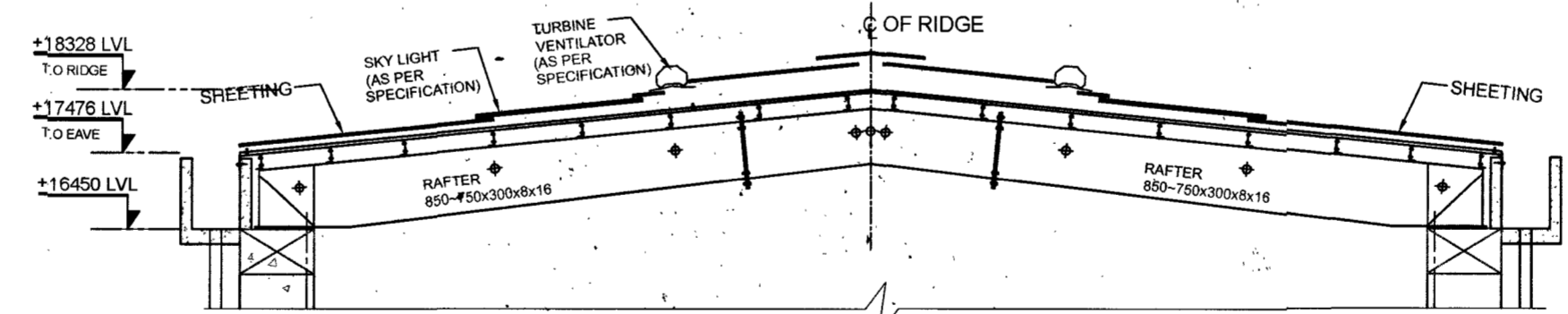

Srinivas Nalla, IDSE
CE (NF)
Director (Design)
for Chief Engineer



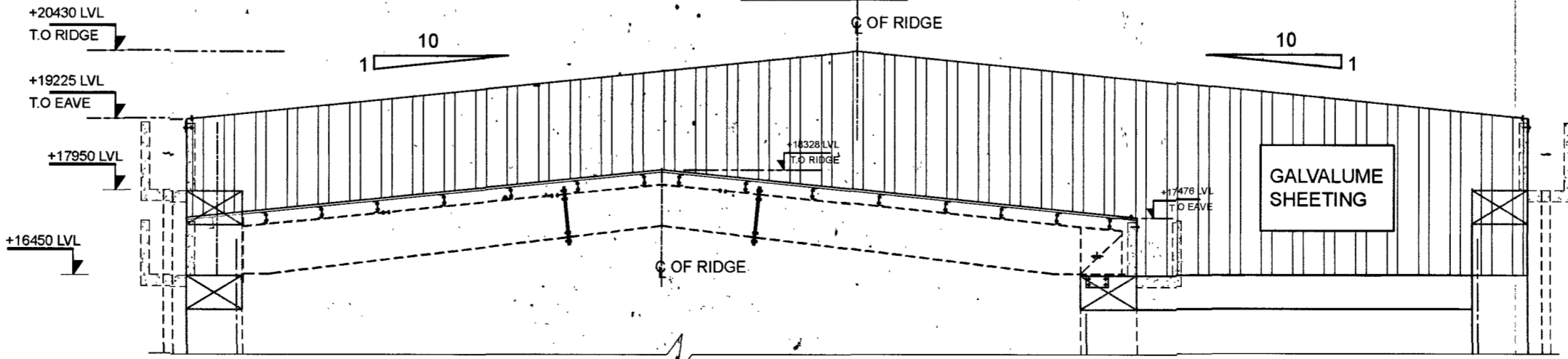
UPPER ROOF SHEETING PLAN



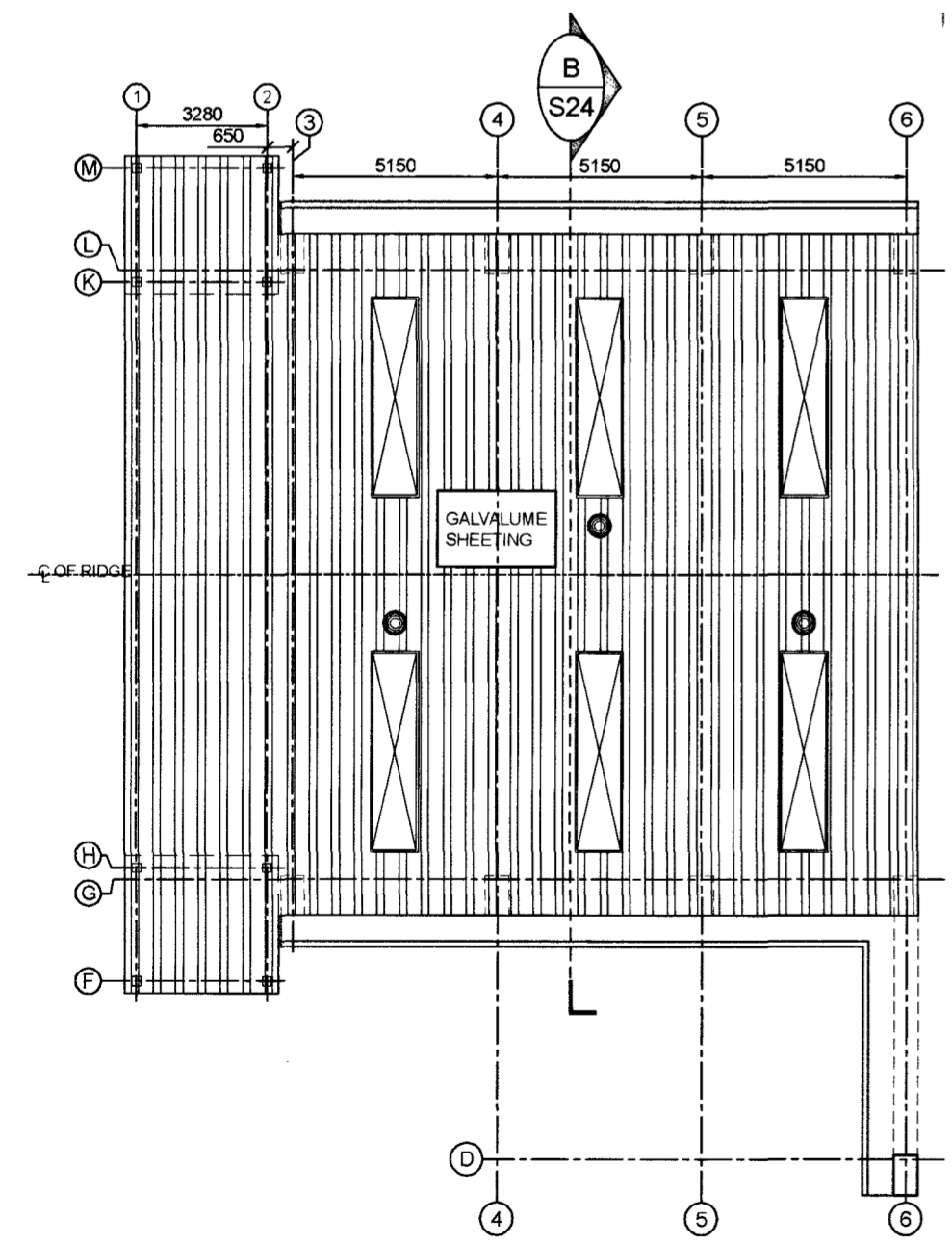
SECTION - A



SECTION - B



END WALL SHEETING ELEVATION ALONG GRID 6



LOWER ROOF SHEETING PLAN